

F  
128  
.47  
.G784



Class \_\_\_\_\_

Book \_\_\_\_\_

COPYRIGHT DEPOSIT





100 *Photographic Views*

OF THE

GREATER

NEW YORK.



# GREATER NEW YORK ALBUM.

ONE HUNDRED SELECTED VIEWS.

NEW YORK CITY, BROOKLYN, STATEN ISLAND, ETC.

FROM RECENT PHOTOGRAPHS.

CHICAGO AND NEW YORK:  
RAND, McNALLY & COMPANY, PUBLISHERS.

1895.



25682

Copyright, 1894, by Rand, McNally & Co.  
Copyright, 1895, by Rand, McNally & Co.

111  
47  
-GTT





A MISTY MORNING ON NEW YORK BAY.



CASILE GARDEN

BATTERY PARK AND HARBOR FROM ROOF OF WASHINGTON BUILDING — 1 Broadway



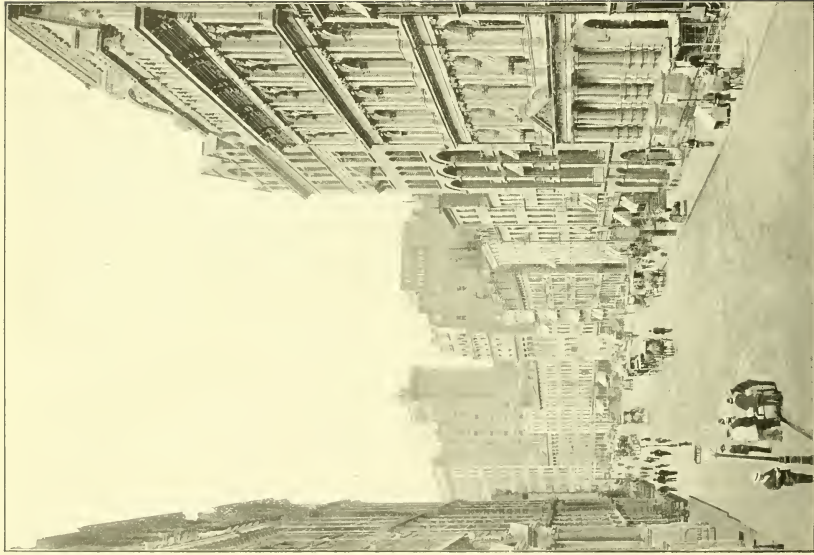
VIEW LOOKING SOUTHWEST FROM ROOF OF OFFICE BUILDING, 60 BROADWAY.



VIEW LOOKING SOUTH FROM ROOF OF OFFICE BUILDING, 66 BROADWAY.



VIEW LOOKING NORTHEAST FROM ROOF OF OFFICE BUILDING, 66 BROADWAY.



N. Y. STOCK EXCHANGE

BROAD STREET, LOOKING SOUTH FROM WALL STREET



INTERIOR OF NEW YORK STOCK EXCHANGE—Broad and Wall Streets.



ASSAY OFFICE.

UNITED STATES SUB-TREASURY — Northeast Corner Wall and Nassau Streets.





THE NEW YORK CLEARING HOUSE—Cedar Street,  
between Broadway and Nassau Street.

R. W. GIBSON, Architect.



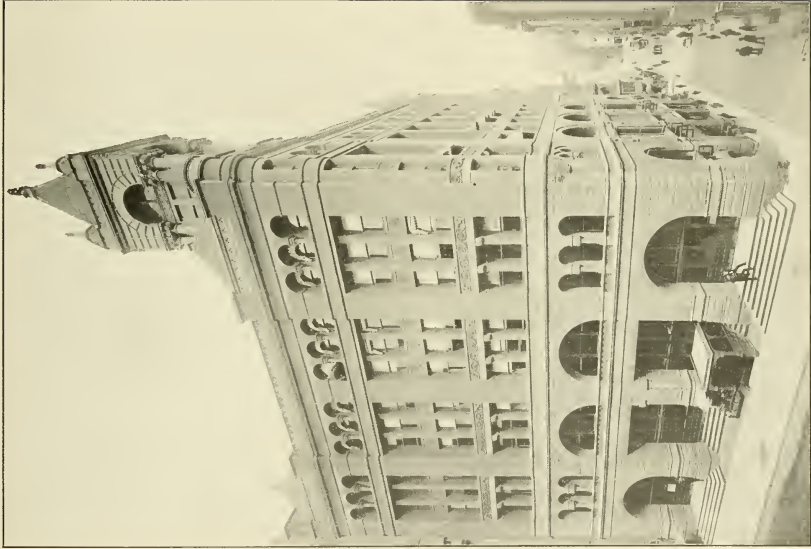
DELMONICO'S—Corner Beaver and South William Streets.

JAS. BROWN LORD, Architect.



R. MC N-CO

WALL STREET AND TRINITY CHURCH.



CONSOLIDATED STOCK AND PETROLEUM EXCHANGE — Northeast Corner  
Broadway and Exchange Place.

F. D. LEROUX, Architect.



THE COFFEE EXCHANGE OF THE CITY OF  
NEW YORK — 113-117 Pearl Street.

R. W. GIBSON, Architect.



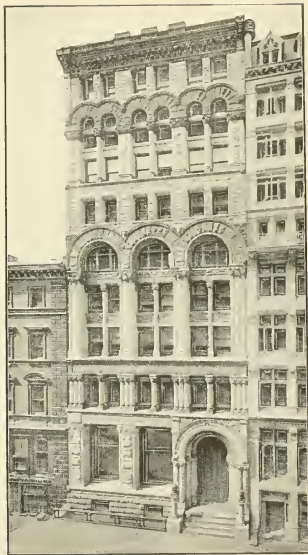
FIDELITY & CASUALTY CO.'S BUILDING — Cedar  
Street, from Temple to Church Streets.

CYRUS L. W. EIDLITZ, Architect.



CORN EXCHANGE BANK — Corner William and  
Beaver Streets.

R. H. ROBERTSON, Architect.



UNITED STATES TRUST CO.— 45 Wall Street.

R. W. GIBSON, Architect.

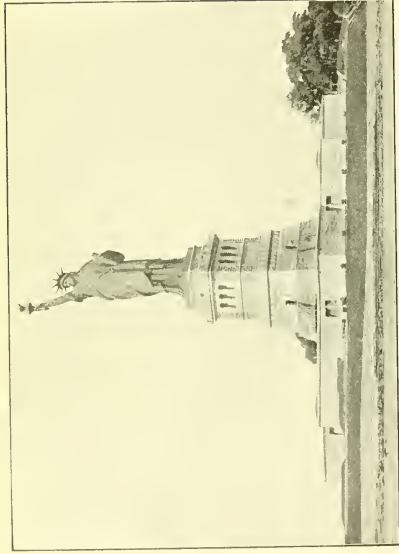


JEANETTE PARK

SOUTH STREET, LOOKING SOUTH FROM COENTIES SLIP.

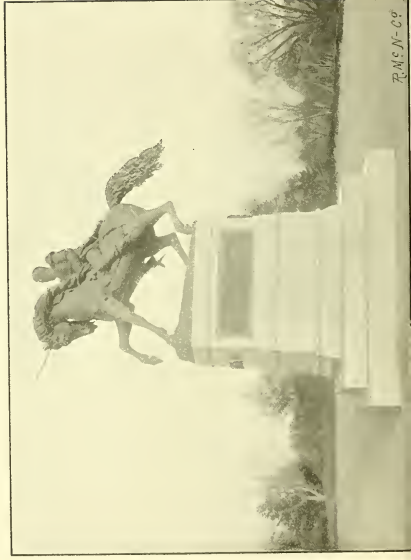


OCEAN STEAMERS IN BERTHS, NORTH RIVER.



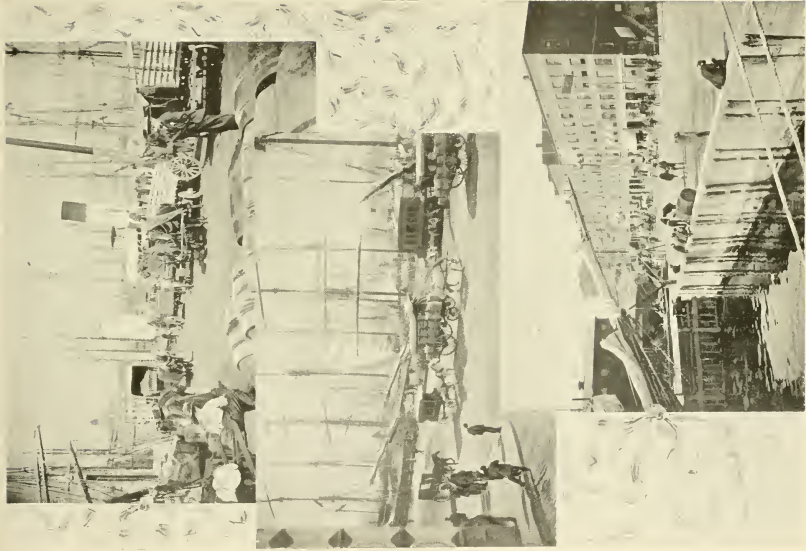
LIBERTY ENLIGHTENING THE WORLD — Bedloe's Island, New York Bay

Statue by BARTHOLDI

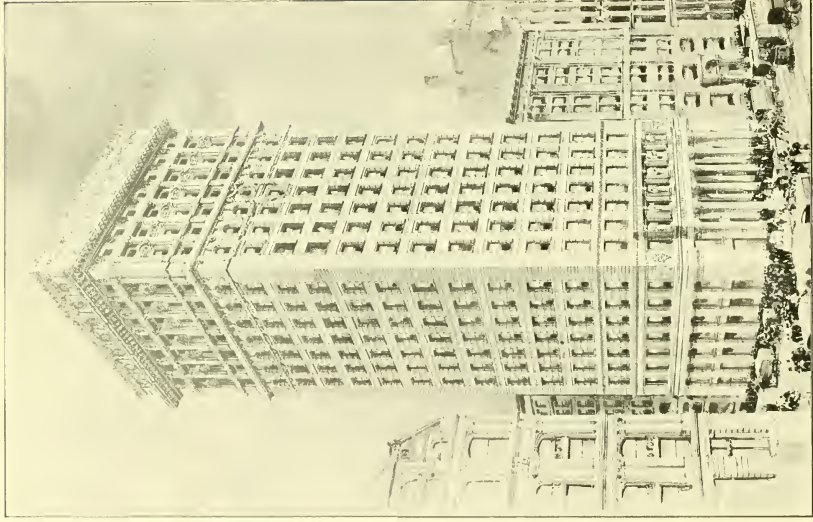


R.M.C.N.-C9

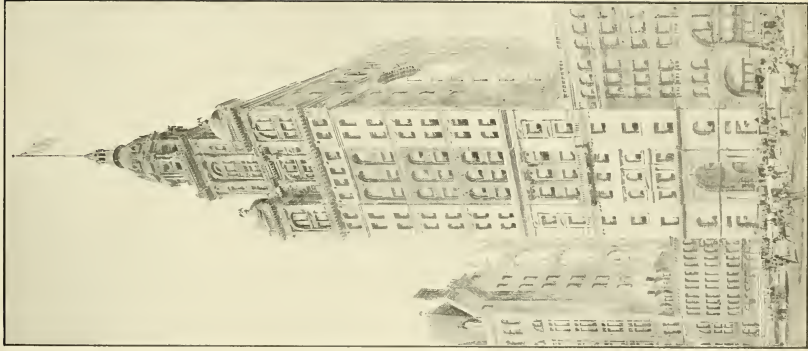




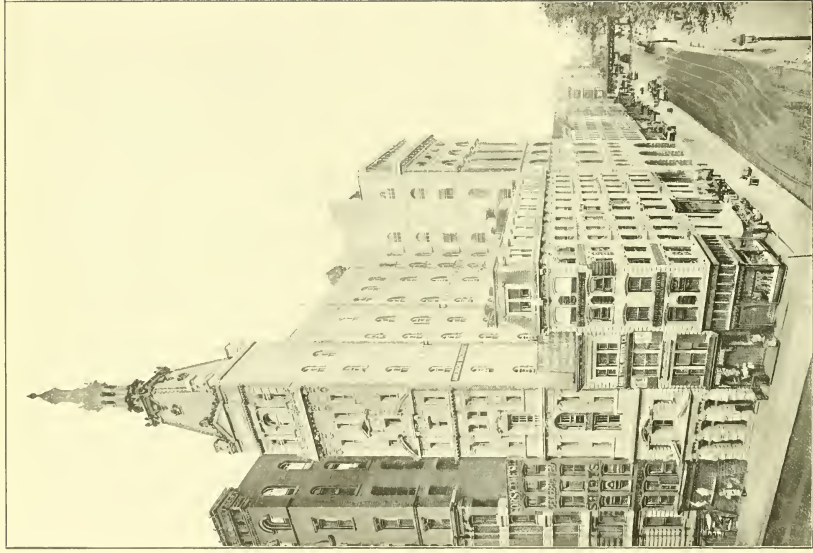
SOME SOUTH STREET SCENES.



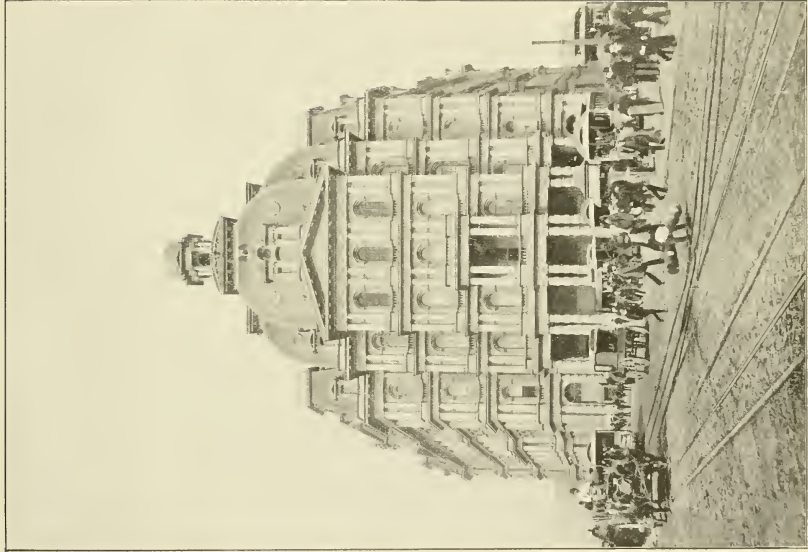
AMERICAN SURETY COMPANY.— Southeast, Corner Broadway and Pine Street.



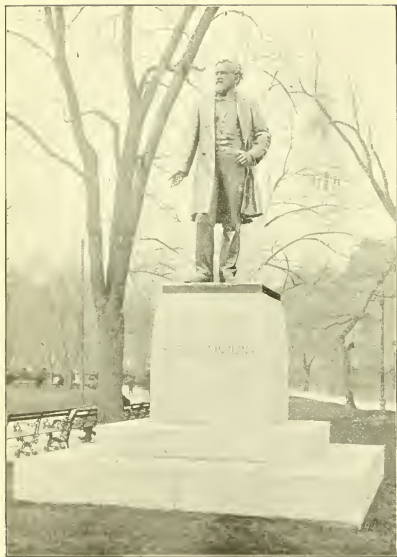
MANHATTAN LIFE INSURANCE CO.'S  
BUILDING—64 and 66 Broadway.



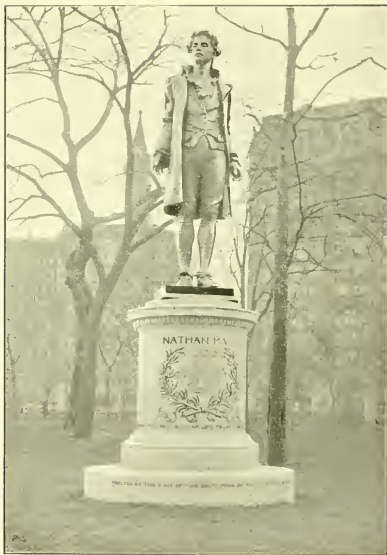
MAIL AND EXPRESS BUILDING — Broadway and Fulton Street.



NEW YORK POST OFFICE — Broadway, Park Row, and Mail Street.



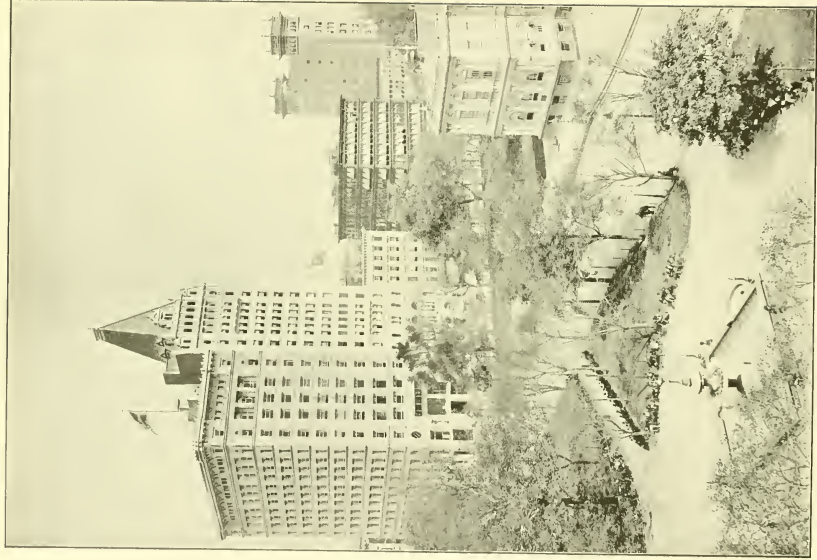
STATUE OF ROSCOE CONKLING — Madison Square.



STATUE OF NATHAN HALE — City Hall Park.



THE CITY HALL, NEW YORK—In City Hall Park, between Broadway and Park Row, opposite Murray Street.



CITY HALL PARK AND NEW BUILDINGS ON BROADWAY — Between  
Market and Chestnut Streets.





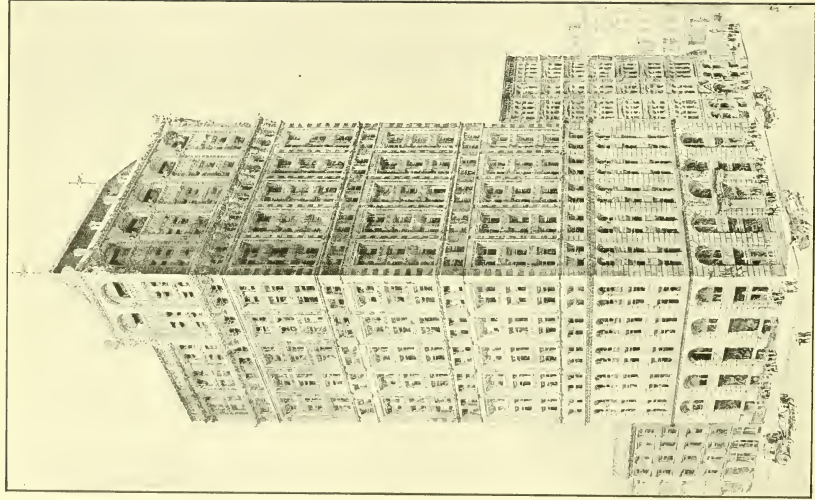
WORLD.

SUN.

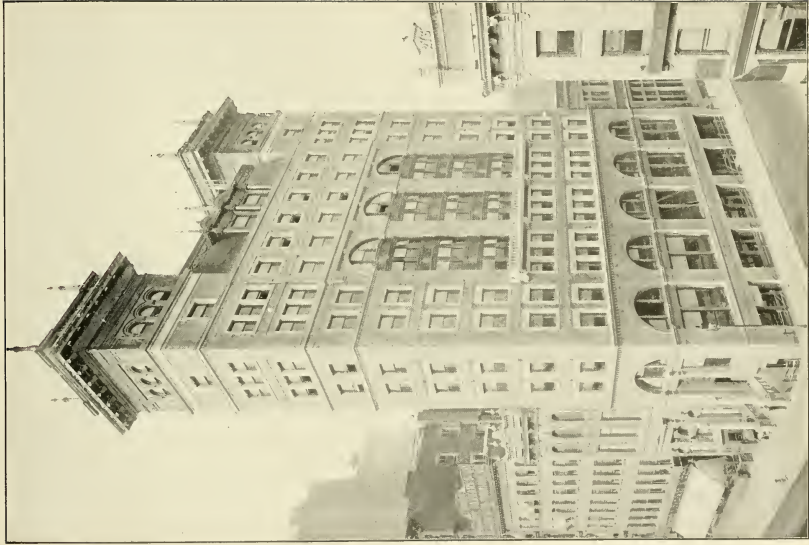
TRIBUNE.

TIMES.

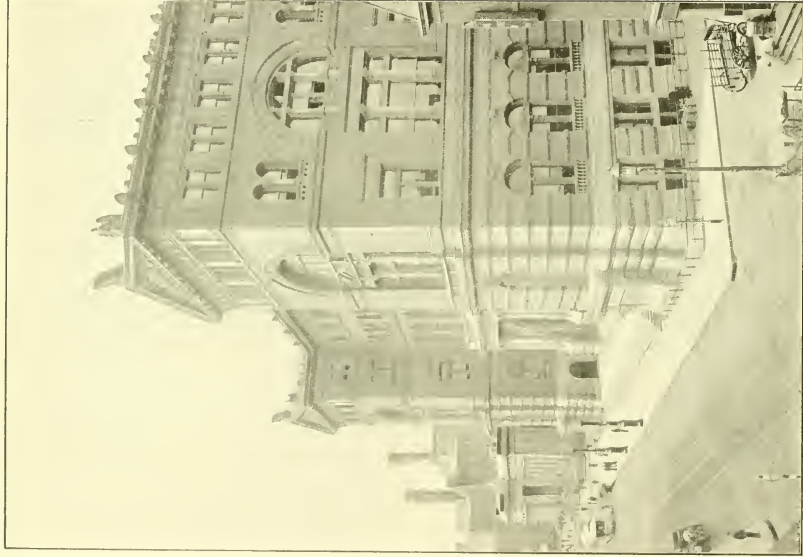
PRINTING HOUSE SQUARE.



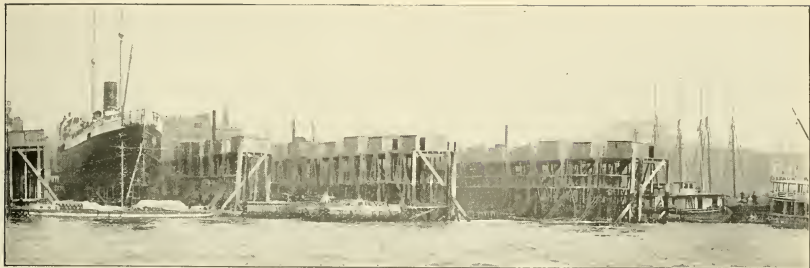
AMERICAN TRACT SOCIETY—Southeast Corner Nassau and Spruce Streets.



NATIONAL SHOE & LEATHER BANK BUILDING — Southwest Corner  
Broadway and Chambers Street.



THE CRIMINAL COURTS AND THE TOMBS.—Centre Street, Franklin  
to Leonard Streets.

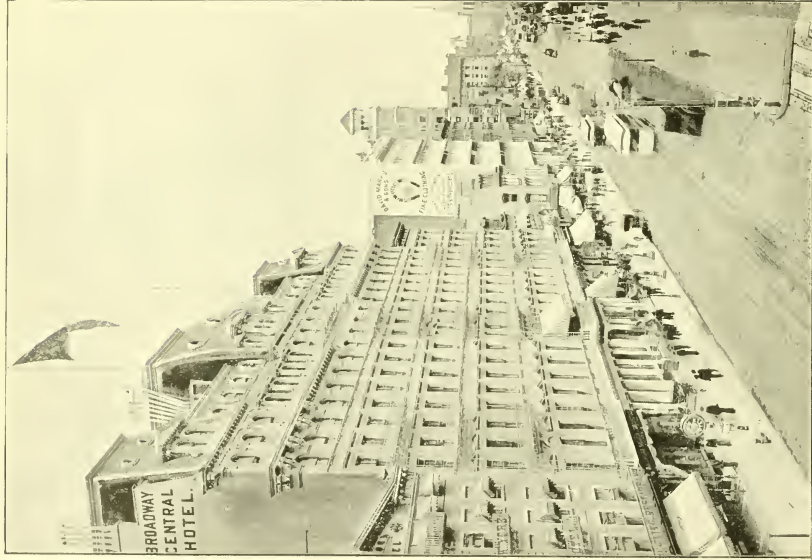


SECTIONAL DRY DOCK—East River, New York.



OLD FRIGATE "VERMONT," USED AS A RECEIVING SHIP.

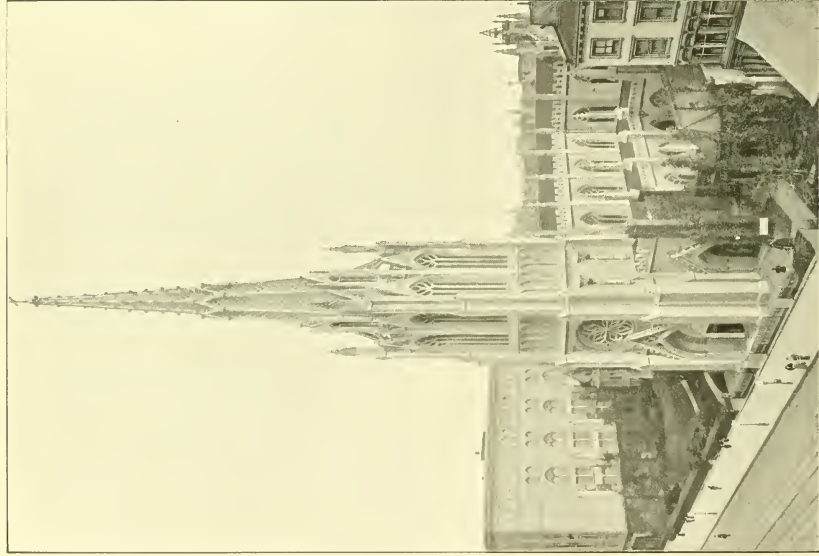
BROOKLYN NAVY YARD—East River.



BROADWAY, BOND STREET TO TENTH STREET.

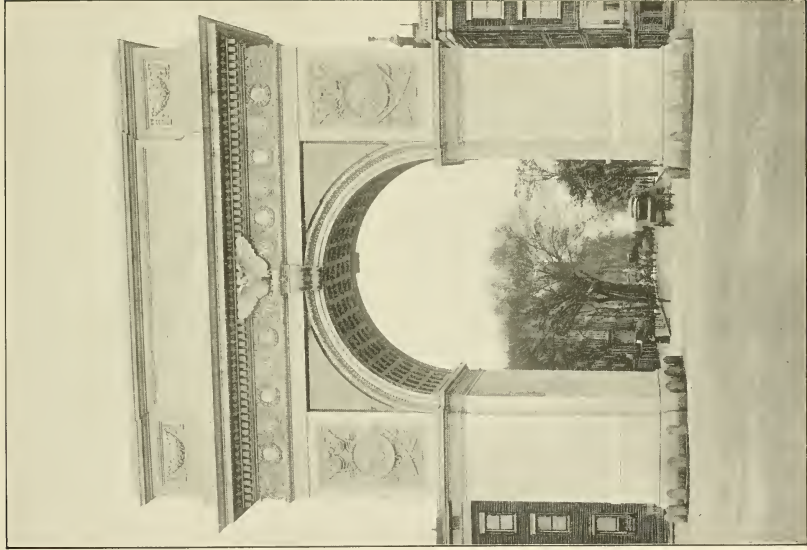


BROADWAY, FROM TENTH STREET TO UNION SQUARE.

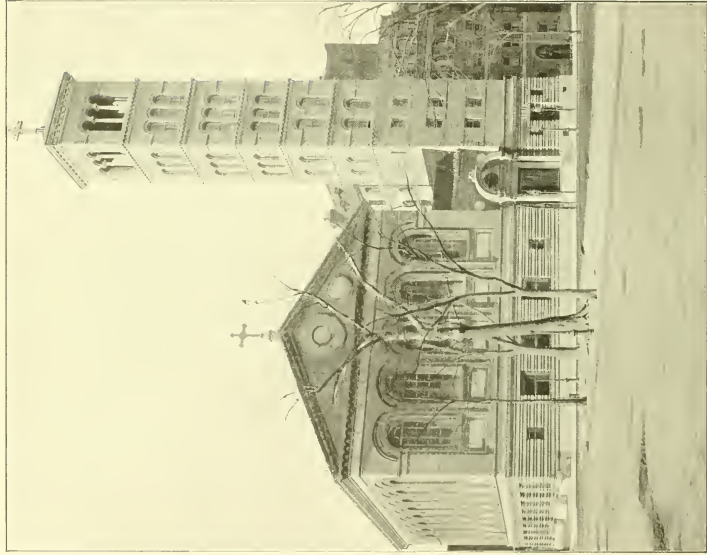


GRACE CHURCH, PROTESTANT EPISCOPAL. — Broadway, near Tenth Street.





THE WASHINGTON MEMORIAL ARCH — Washington Square, at the beginning of Fifth Avenue.



JUDSON MEMORIAL BAPTIST CHURCH — Washington Square (South) and  
Thompson Street.

McKIM, MEAD & WHITE, Architects.



FOURTEENTH STREET, LOOKING WEST FROM FIFTH AVENUE.



WASHINGTON EQUESTRIAN MONUMENT.

UNION SQUARE — Looking Northwest from Corner Fourth Avenue and Fourteenth Street.

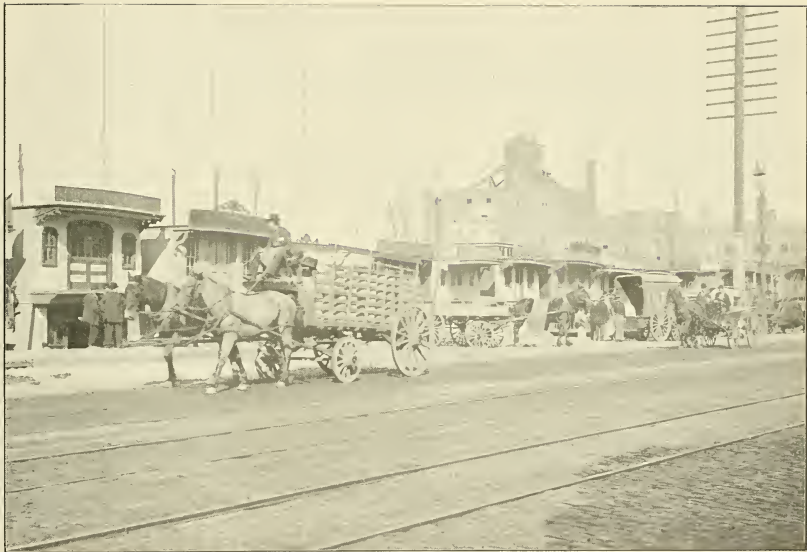


INTERIOR OF CHURCH OF ST. FRANCIS XAVIER — 36 West Sixteenth Street.

PATRICK C. KEELY, Architect.



GANSEVOORT MARKET—West and Washington Streets, Gansevoort to Little Twelfth Street.



OYSTER ROW — West Street, near Foot of Eleventh Street.



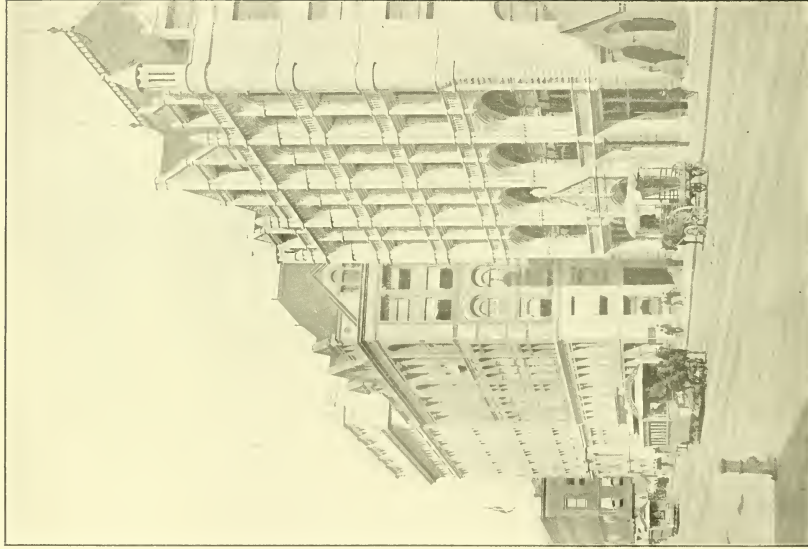
COLUMBUS MONUMENT.—Fifty-ninth Street, Broadway, and Eighth Avenue.





SOME NEW YORK STATUES.

ABRAHAM LINCOLN, UNION SQUARE (WEST) AND EAST FOURTEENTH STREET.  
WILLIAM H. SEWARD, MADISON SQUARE.  
S. F. B. MORSE, THE MALL, CENTRAL PARK.

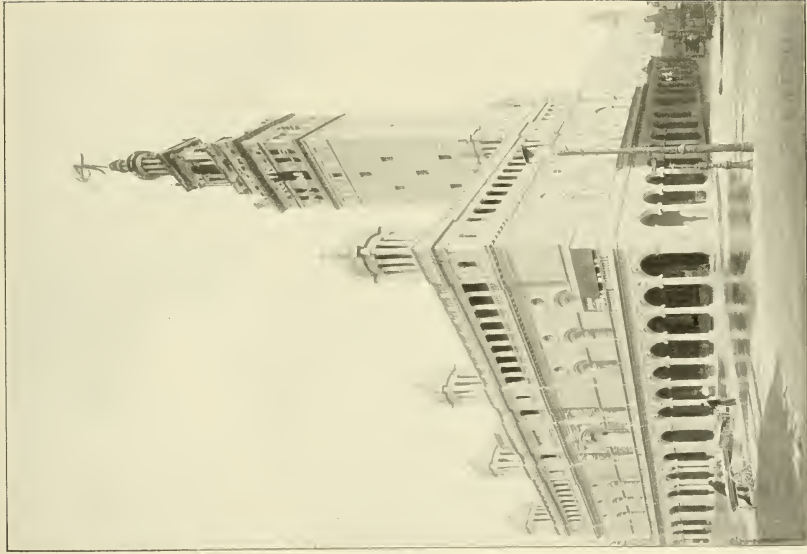


SOCIETY FOR PREVENTION OF  
CRUELTY TO CHILDREN

UNITED CHARITIES  
BUILDING.

CHURCH MISSIONS  
HOUSE.

FOURTH AVENUE — Twenty-first to Twenty-third Streets



MADISON SQUARE GARDEN — Madison and Fourth Avenues,  
West Twenty-sixth, and West Twenty-seventh Streets

McCOMBS, MERRILL, & WAIVER, Architects



FIFTH AVENUE HOTEL.

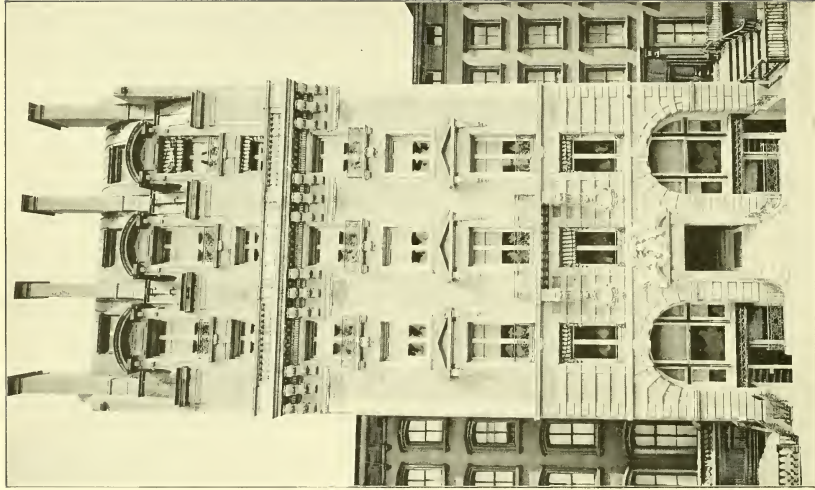
MADISON SQUARE.

JUNCTION BROADWAY AND FIFTH AVENUE.

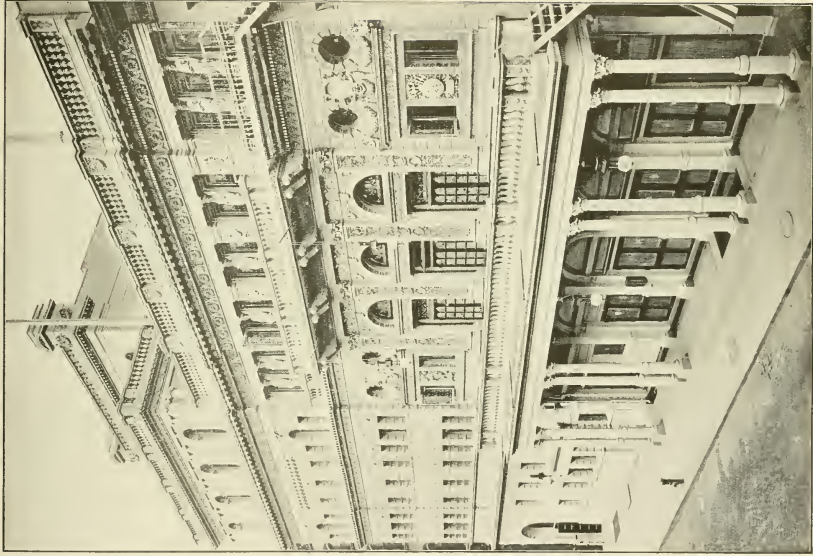


ARMORY, 71st REGIMENT, N. G. S. N. Y.—Southeast Corner Park Avenue and Thirty-fourth Street.

J. R. THOMAS, Architect.

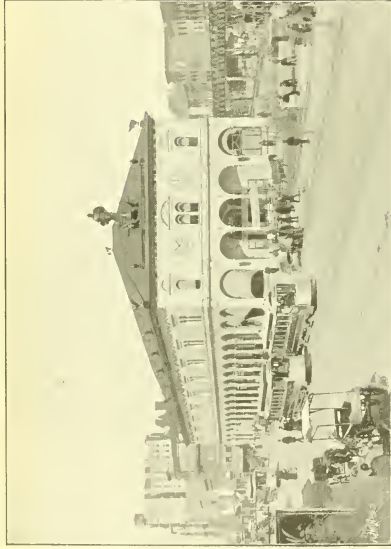


"LIFE" BUILDING—19 West Thirty-first Street.



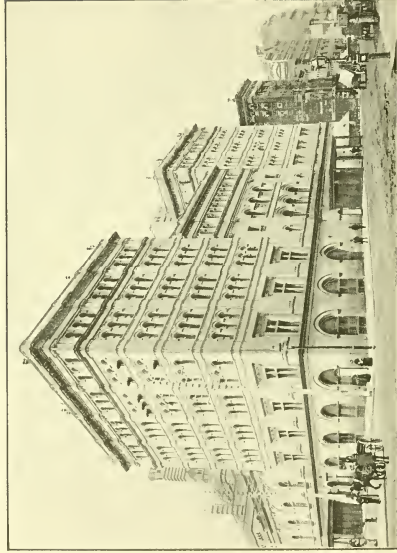
FIFTH AVENUE THEATER — Twenty-eighth Street, near Broadway.

FRANCIS H. KIMBALL, Architect.



NEW YORK HERALD BUILDING.—Herald Square, Broadway, Sixth Avenue,  
and Thirty-fifth Street.

McKIM MEAD & WHITE, Architects.



METROPOLITAN OPERA HOUSE.—Broadway, Seventh Avenue, West Thirty-ninth  
and West Fortieth Streets





HARRIGAN'S THEATER — West Thirty-fifth Street,  
near Sixth Avenue.

FRANCIS H. KIMBALL, Architect.



BERKELEY SCHOOL — 20 West Forty-fourth Street.

LAMB & RICCI, Architects.



THE CASINO AND ABBEY'S THEATER—Broadway, Thirty-ninth to Thirty-eighth Street.



NORMAL COLLEGE—Park and Lexington Avenues, Sixty-eighth to Sixty-ninth Street.



WORK HOUSE, BLACKWELL'S ISLAND—East River.



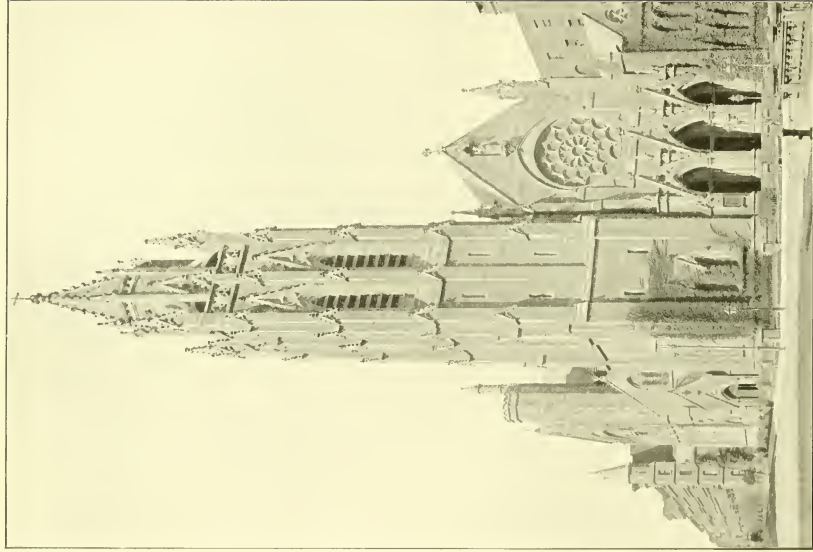
CITY HOSPITAL.

NURSES' HOME.

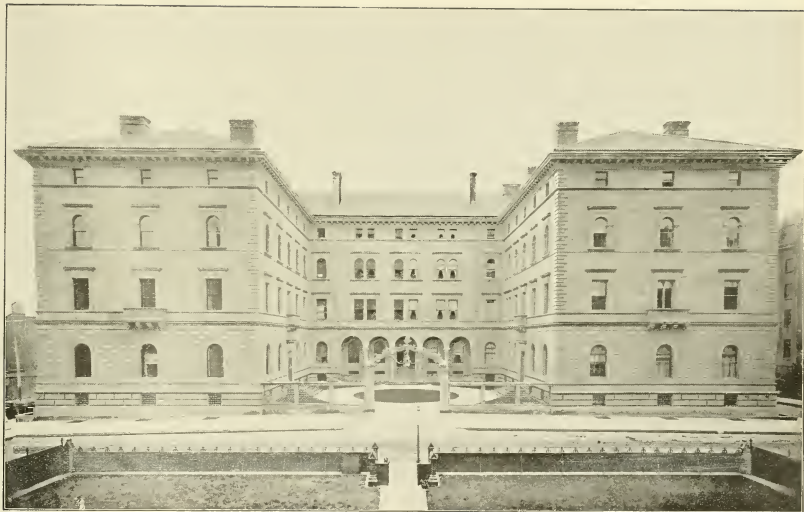
SOUTH END BLACKWELL'S ISLAND—East River.



WEST STREET, LOOKING NORTH FROM RECTOR STREET.



ST. THOMAS' CHURCH — Fifth Avenue and Fifty-third Street.



H. C. FAHNESTOCK.

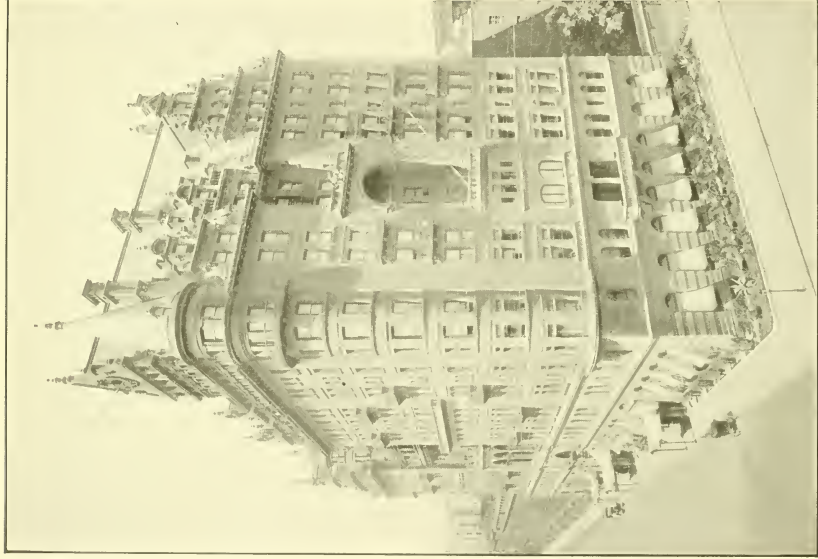
J. T. ADAMS.

A. H. HOLMES.

WILLIAM REID.

RESIDENCES NORTHEAST CORNER MADISON AVENUE AND FIFTIETH STREET.

McKIM, MEAD & WHITE, Architects



THE WALDORF — Northwest Corner Fifth Avenue and Thirty-third Street.





WINDSOR HOTEL AND FIFTH AVENUE — Looking North from Forty-sixth Street.



THE CENTURY CLUB — 7 West Forty-third Street.

McKIM, MEAD & WHITE, Architects.



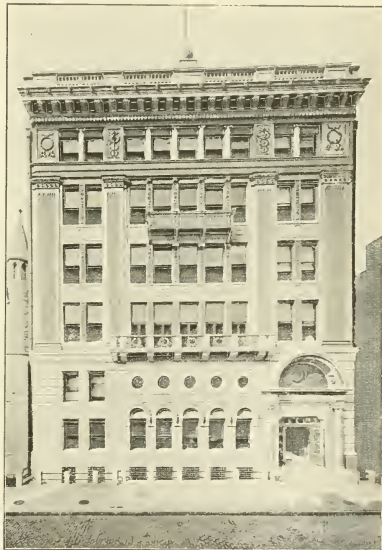
SOCIETY OF AMERICAN ARTISTS — 215 West  
Fifty-seventh Street.

H. J. HARDENBERGH, Architect.



ST. BARTHOLOMEW'S PARISH HOUSE—205 East  
Forty-second Street.

RENWICK, ASPINWALL & RENWICK, Architects.



COLLEGE OF PHARMACY—115 West Sixty-eighth Street.

LITTLE & O'CONNOR, Architects.



MRS. WM. H. VANDERBILT.

WM. D. SLAYL.

FIFTH AVENUE, FIFTY-FIRST TO FIFTY-SECOND STREETS.

HEUER BROS., Architects.



RESIDENCE OF CORNELIUS VANDERBILT—Fifth Avenue, Fifty-seventh to Fifty-eighth Street.

GEORGE B. POST, Architect.

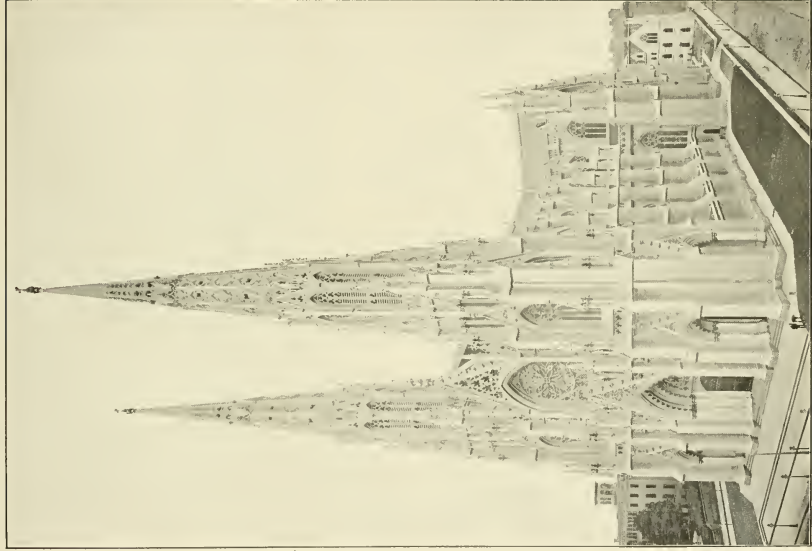


ENTRANCE, CHURCH MISSIONS HOUSE Southeast  
Corner Fourth Avenue and Twenty second Street.

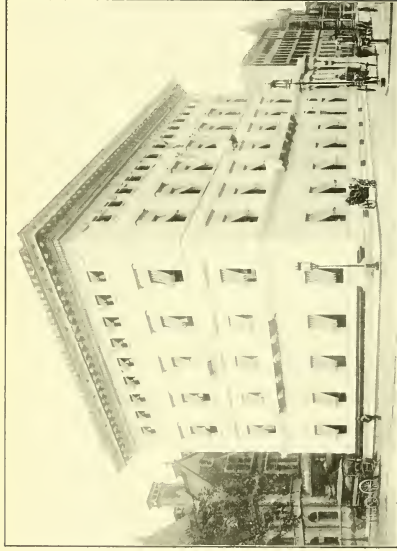
R. W. GIBSON, Architect



INTERIOR OF ST. PATRICK'S CATHEDRAL.

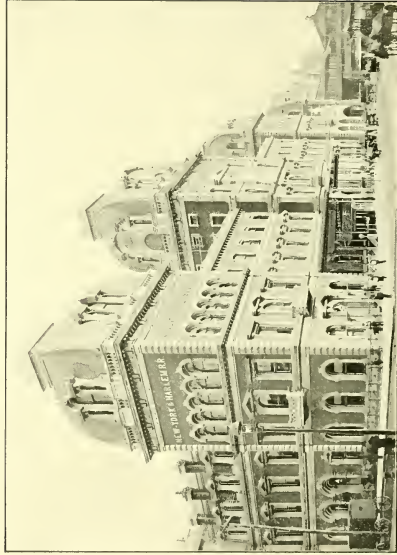


ST. PATRICK'S CATHEDRAL, ROMAN CATHOLIC — Fifth Avenue, Fiftieth, and  
Fifty-first Streets.



METROPOLITAN CLUB—Northeast Corner Fifth Avenue and Sixtieth Street

MCKIM, MEAD & WHITE, Architects



THE GRAND CENTRAL RAILROAD STATION





HOTEL NEW NETHERLAND—Northeast Corner Fifth Avenue and Fifty-ninth Street.

WM. H. HUME, Architect.



HOTEL SAVOY—Southeast Corner Fifth Avenue and Fifty-ninth Street.

RALPH S. TOWNSEND, Architect.



THE MALL, CENTRAL PARK.



LOOKING OBELISK.

THE EAST DRIVE — Central Park.



THE METROPOLITAN MUSEUM OF ART—Central Park, near Fifth Avenue and Eighty-second Street.



METROPOLITAN MUSEUM OF ART—Hall of Architectural Casts.



FOUNTAIN AND LAKE — Central Park.



AMERICAN MUSEUM OF NATURAL HISTORY—Central Park (West) and Seventy-seventh Street

CADY, BERG & SEE, Architects.



MAY PARTIES, CENTRAL PARK.





TEMPLE BETH-EL, HEBREW — Southeast Corner  
Fifth Avenue and Seventy-sixth Street.

BRUNNER & TRYON, Architects.



HOLLAND HOUSE — Southwest Corner Fifth Avenue and  
Thirtieth Street.

GEO. E. HARDING & GOOCH, Architects.



HOTEL MAJESTIC—Central Park (West), Seventy-first to Seventy-second Street.

ALFRED ZUCKER, Architect.



THE DAKOTA FLATS — Northwest Corner Central Park (West) and Seventy-second Street.

H. J. HARDENBURG, Architect.



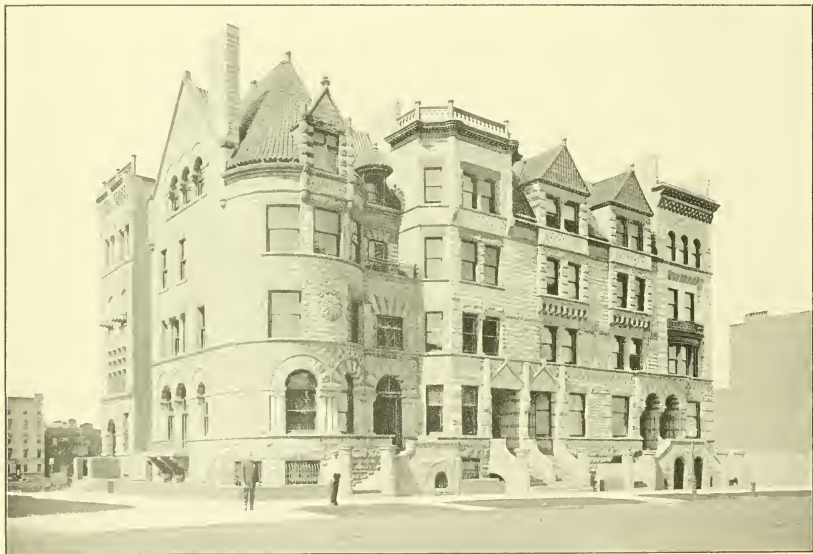
COLONIAL CLUB—Boulevard and Seventy-second Street.

HENRY F. KILBURN, Architect.



RESIDENCE OF CHARLES L. TIFFANY—Northwest Corner Madison Avenue and Seventy-second Street.

McKIM, MEAD & WHITE, Architects.



RESIDENCES — Southwest Corner West-End Avenue and Seventy-second Street.

LAMB & RICH, Architects.



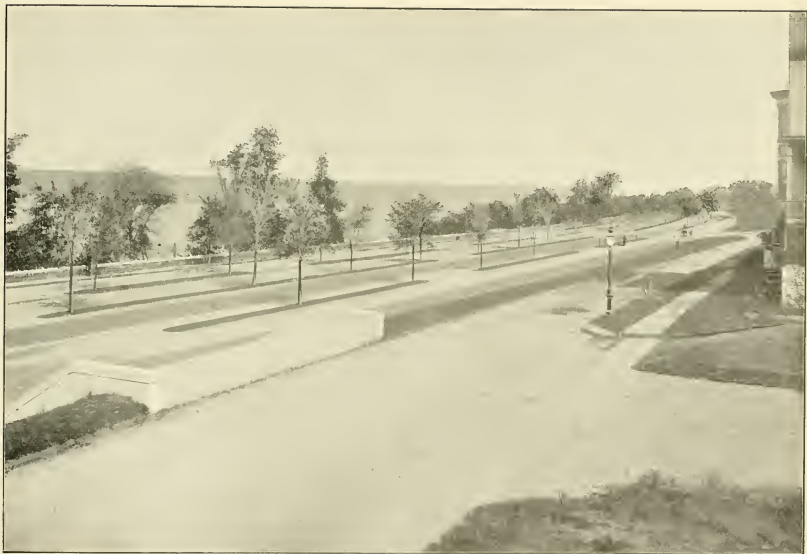
RESIDENCES — Southwest Corner West-End Avenue and Eighty-third Street.



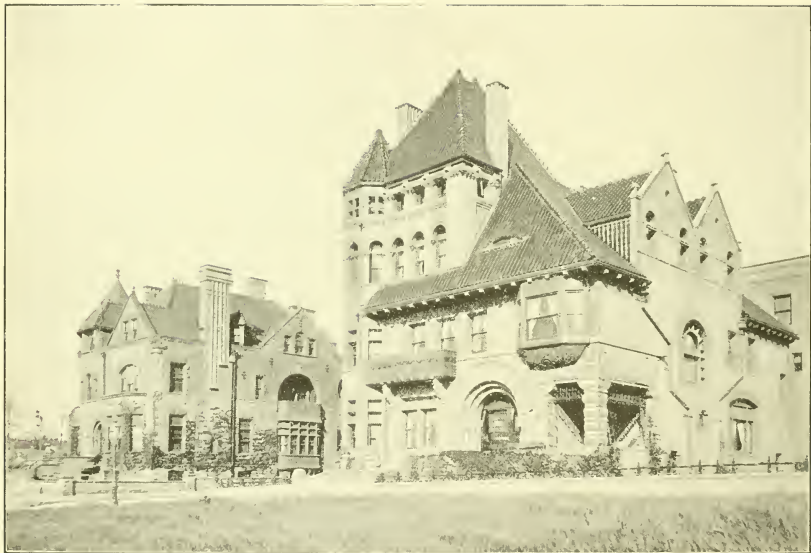
RESIDENCE OF JOHN H. MATTHEWS, ESQ. — Northwest Corner Riverside Drive and Ninetieth Street.

LAMB & RICH, Architects.





RIVERSIDE DRIVE — Looking North from One Hundred and Sixth Street.



RESIDENCE SAMUEL G. BAYNE FRANK FREEMAN, ARCHT.

RIVERSIDE DRIVE AND ONE HUNDRED AND EIGHTH STREET.



ONE HUNDRED AND TWENTY-FIFTH STREET, LOOKING WEST FROM SEVENTH AVENUE.



FIFTH AVENUE, LOOKING NORTH FROM ONE HUNDRED AND TWENTY-SIXTH STREET.



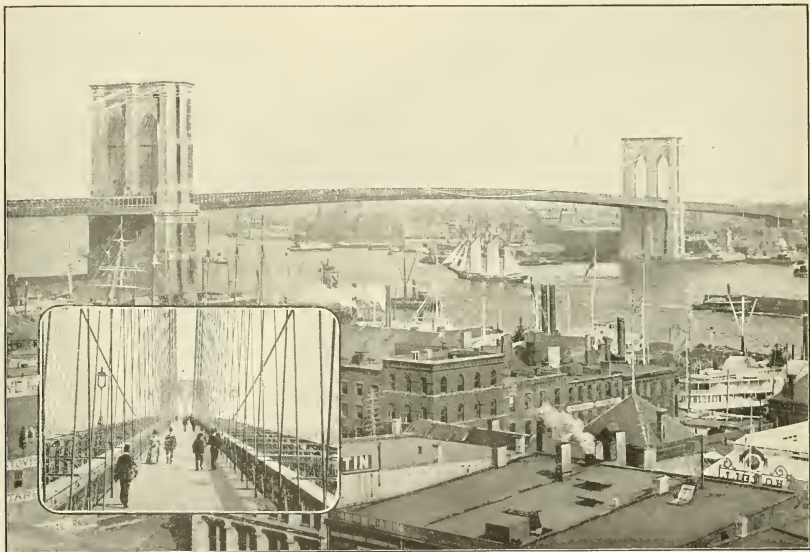
THE JUMEL MANSION — Washington Heights.  
(Once Washington's Headquarters.)



THE UNION LEAGUE CLUB — Northwest Corner Fifth  
Avenue and Thirty-ninth Street.



THE WASHINGTON BRIDGE—Across Harlem River, from One Hundred and Eighty-first Street and Tenth Avenue to Aqueduct Avenue.



PROMENADE

NEW YORK AND BROOKLYN BRIDGE.



VIADUCT AND HARLEM RIVER, FROM NEW SPEEDWAY -- One Hundred and Fifty-fifth Street.



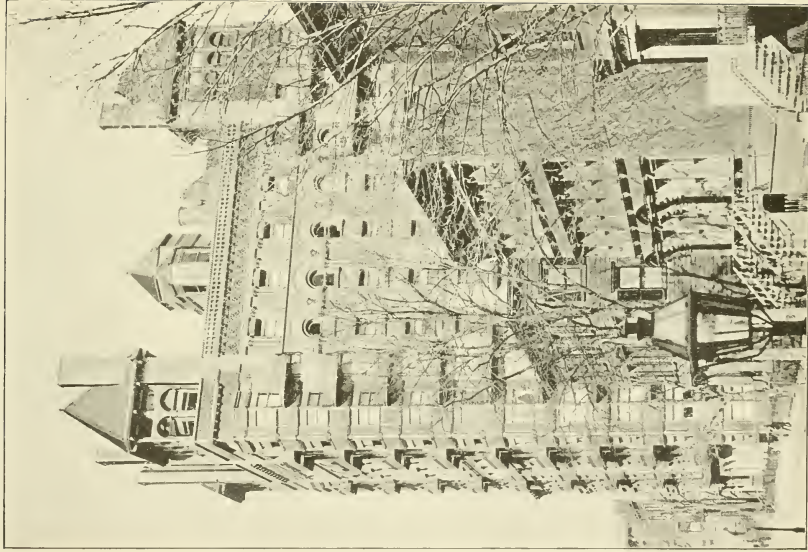


CHURCH AND LIBRARY, SAILOR'S SNUG HARBOR—West New Brighton, Staten Island.

R. W. GIBSON, Architect.



CITY HALL, BROOKLYN - Fulton and Court Streets.



HOTEL MARGARET — Columbia Heights, Brooklyn



STATUE OF HENRY WARD BEECHER.

FULTON AND COURT STREETS, BROOKLYN.

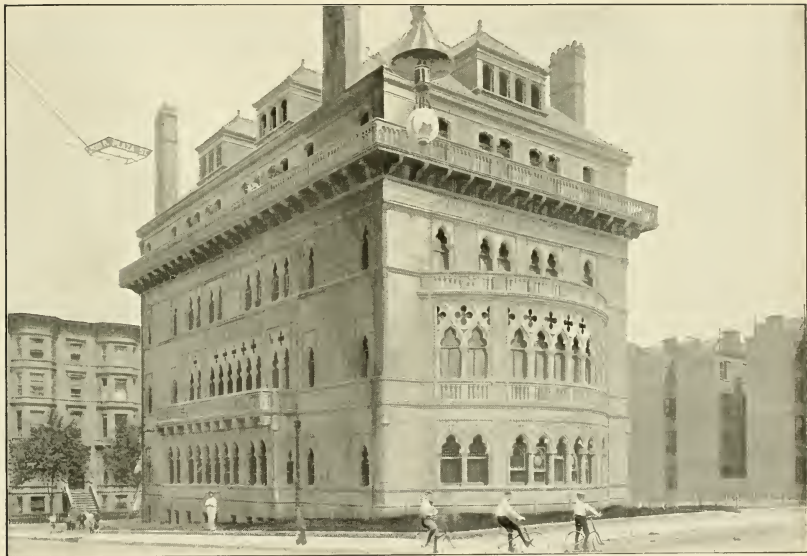


BROOKLYN SAVINGS BANK — Corner Pierrepont and Clinton Streets.

FRANK FREEMAN, Architect.

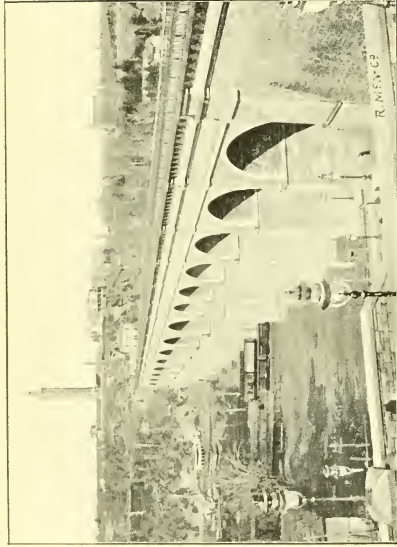


FIRE HEADQUARTERS, BROOKLYN — Jay Street, near Willoughby.



MONTAUK CLUB, BROOKLYN — Eighth Avenue and Lincoln Place.

FRANCIS H. KIMBALL, Architect.

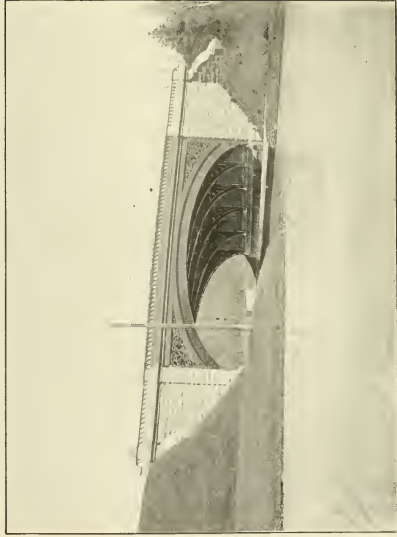


HIGH BRIDGE — Across Harlem River at One Hundred and Seventy-fifth Street and Tenth Avenue.



THE MEMORIAL ARCH — Plaza Entrance to Prospect Park, Brooklyn.





BRIDGES — PROSPECT PARK, BROOKLYN.



IN PROSPECT PARK, BROOKLYN.



MANHATTAN BEACH HOTEL.

BRIGHTON BEACH—CONEY ISLAND.



## TABLE OF CONTENTS.

	Page.		Page
Abbey's Theater . . . . .	52	Delmonico's . . . . .	11
American Museum of Natural History . . . . .	73	Fidelity & Casualty Co. Building . . . . .	14
American Surety Co.'s Building . . . . .	20	Fifth Avenue, Fifty-first to Fifty-second Street . . . . .	62
American Tract Society's Building . . . . .	28	Fifth Avenue Hotel . . . . .	46
Battery Park and New York Bay, from Roof of Washington Building . . . . .	4	Fifth Avenue, Fifty-first to Fifty-second Street . . . . .	62
Berkeley School . . . . .	51	Fifth Avenue, Looking North from One Hundred and Twenty-sixth Street . . . . .	86
Bolivar, Statue of . . . . .	18	Fifth Avenue Theater . . . . .	49
Bridges, Prospect Park, Brooklyn . . . . .	99	Fire Headquarters, Brooklyn . . . . .	96
Brighton Beach, Coney Island . . . . .	101	Fourteenth Street, Looking West from Fifth Avenue . . . . .	37
Broad Street, Looking South from Wall Street . . . . .	8	Fourth Avenue, from Twenty-first to Twenty-third Street . . . . .	44
Broadway and Bond Street to Tenth Street . . . . .	32	Gansevoort Market . . . . .	40
Broadway, from Tenth Street to Union Square . . . . .	33	Grace Church . . . . .	34
Brooklyn Bridge . . . . .	89	Grand Central Depot . . . . .	66
Brooklyn, Fulton, and Court Streets . . . . .	94	Hale, Nathan, Statue of . . . . .	24
Brooklyn Savings Bank . . . . .	95	Hall of Architectural Casts, Metropolitan Museum of Art . . . . .	71
Casino . . . . .	52	Harrigan's Theater . . . . .	51
Central Park, East Drive . . . . .	69	Herald Building . . . . .	59
Central Park, Fountain and Lake . . . . .	72	High Bridge . . . . .	98
Church and Library, Sailors' Snug Harbor, Staten Island . . . . .	91	Holland House . . . . .	75
Church Missions House, Detail . . . . .	64	Hotel Majestic . . . . .	76
City Hall, Brooklyn . . . . .	92	Hotel Margaret, Columbia Heights, Brooklyn . . . . .	93
City Hall Park and New Buildings on Broadway . . . . .	26	Hotel New Netherland . . . . .	67
Coffee Exchange . . . . .	14	Hotel Savoy . . . . .	67
College of Pharmacy . . . . .	61	Judson Memorial Baptist Church . . . . .	36
Colonial Club . . . . .	78	Jumel Mansion . . . . .	87
Columbus Monument . . . . .	42	Liberty, Statue of . . . . .	18
Conkling, Roscoe, Statue of . . . . .	24	Life Building . . . . .	48
Corn Exchange Bank . . . . .	15	Madison Square . . . . .	46
Consolidated Stock and Petroleum Exchange . . . . .	13	Madison Square Garden . . . . .	45
Criminal Courts and the Tombs . . . . .	30	Mail and Express Building . . . . .	22
Dakota Flats . . . . .	77	Manhattan Life Insurance Co.'s Building . . . . .	21

TABLE OF CONTENTS — *Continued.*

	Page		Page
Mathews, J. H., Residence of, Northeast Corner Riverside Drive and Ninetieth Street . . . . .	82	South Street, Looking South from Coenties Slip . . . . .	10
May Parties, Central Park . . . . .	74	South Street, Scenes on . . . . .	19
Memorial Arch, Brooklyn . . . . .	98	Southwest Corner of Eighty-third Street and West-End Avenue . . . . .	81
Metropolitan Club . . . . .	66	Southwest Corner of Seventy-second Street and West-End Avenue . . . . .	80
Metropolitan Museum of Art . . . . .	70	St. Bartholomew's Parish House . . . . .	61
Metropolitan Opera House . . . . .	50	St. Francis Xavier Church, Interior of . . . . .	39
Montauk Club, Brooklyn . . . . .	97	St. Patrick's Cathedral . . . . .	65
National Shoe and Leather Bank . . . . .	29	St. Patrick's Cathedral, Interior of . . . . .	64
New York Bay, a Misty Morning on . . . . .	3	St. Thomas Church . . . . .	56
New York City Hall . . . . .	25	Temple Beth-El . . . . .	75
New York Clearing House . . . . .	11	The Mall, Central Park . . . . .	68
New York Post Office . . . . .	23	The Waldorf . . . . .	58
New York Stock Exchange, Interior of . . . . .	9	Tiffany, Charles, Residence of . . . . .	79
Normal College . . . . .	53	Trinity Church, from Wall Street . . . . .	12
Ocean Steamers in Berths, North River . . . . .	17	Union League Club . . . . .	87
One Hundred and Twenty-fifth Street, Looking West from Seventh Avenue . . . . .	85	Union Square . . . . .	38
Oyster Row . . . . .	41	United States Sub-Treasury . . . . .	10
Printing House Square . . . . .	27	United States Trust Co. . . . .	18
Prospect Park, Brooklyn . . . . .	100	Vanderbilt, Cornelius, Residence of . . . . .	63
Residences, Northeast Corner Madison Avenue and Fiftieth Street . . . . .	57	Viaduct and Harlem River, from New Speedway . . . . .	90
Riverside Drive, Looking North from One Hundred and Sixth Street . . . . .	83	View Looking Northeast from Roof of Office Building, 66 Broadway . . . . .	7
Riverside Drive and One Hundred and Eighth Street . . . . .	84	View Looking South from Roof of Office Building, 66 Broadway . . . . .	6
Sectional Dry Dock and Brooklyn Navy Yard . . . . .	31	View Looking Southwest from Roof of Office Building, 66 Broadway . . . . .	5
Seventy-first Regiment Armory . . . . .	47	Washington Bridge . . . . .	88
Society of American Artists and Century Club . . . . .	60	Washington Memorial Arch . . . . .	35
Some New York Statues . . . . .	43	West Street . . . . .	55
South End Blackwell's Island and Work House, Blackwell's Island . . . . .	54	Windsor Hotel . . . . .	59









LIBRARY OF CONGRESS



0 014 221 579 2 ●